



Sardis Secondary School Newsletter



Chilliwack
School District

October 18, 2017

DEAR SARDIS SECONDARY PARENTS & GUARDIANS;

During the 2016-2017 school year, Sardis Secondary activated the Parent Portal on My EducationBC. This is a powerful tool for parents: to access student information, attendance, and grades information, including report cards. Parents/Guardians can also confirm that demographic and contact information are up to date, as teachers use the information in MyEdBC to contact parents throughout the school year.

To login go to <http://www.myeducation.gov.bc.ca/aspn/logon.do>.

Default login and password are case sensitive and are as follows:

Login ID: 33firstname_lastname
(example: 33john_smith – all lower case)

Password: Sept\$2017
(this is a temporary password and will expire on October 31, 2017. You will need to login and create a new password before this date.)

Please activate your account right away. The first time you log onto the parent portal you need to do this from a computer. Once the account is set up you can login using a mobile device. The attached information brochure (page 3 and 4 of this newsletter) should help with any questions you may have on the Parent Portal.

Term 1 report cards will be available on the portal November 10th; paper copies will be sent home on November 14th. If you are having difficulties or miss the activation window, please email the Sardis Secondary parent portal manager gloria_mccarty@sd33.bc.ca.

CAREER CENTRE NEWS

- UFV will be at Sardis Secondary on Oct. 26 during the day, offering one-on-one counselling sessions for prospective students. Sign-up at the Career Center Oct. 23.
- Find out about Scholarships, Bursaries & Student Financial Aid. The 'Financial Opportunities Evening' is coming up on Oct. 26 from 6:30 –

7:30 in the Pit. For Parents & students.

- UBC will be holding an information session for all interested students on Nov. 1 from 8:30 – 9:30 in the Mac Theater. Pick up your Class Release form at the Career Center.

WILLY WONKA & THE CHOCOLATE FACTORY

Tuesday to Saturday. December 5—9 at 7pm with a matinee on Saturday, December 9 at 2pm. Tickets at the main office.



Calendar Items

October

- 11-27 Grad Photos (2:50-9:00pm)
- 18/19 Josten's Grad Rings here at lunch
- 20 Non-Instructional Day—school closed
- 26 Parent/Teacher Interviews 6pm
- 27 Early Dismissal at 12:34pm

November

- 1 UBC Information Visit 8:30-9:30am
- 2 Term 1 ends
- 3 Non-Instructional Day—school closed
- 6 Term 2 begins
- 13 Remembrance Day - school closed
- 14 Report Cards Issued
PAC meeting 7pm
- 17 Grad Cruise 4pm
- 24 Non-Instructional Day—school closed



Chilliwack
School District

October 2017

INCLEMENT WEATHER SCHOOL CLOSURE GUIDELINES

Information for Parents and Students



Inclement weather conditions such as freezing rain, significant snowfall or high wind can occur during the fall and winter months. In such conditions, decisions on the opening or closure of school district facilities are made by the Superintendent of Schools in consultation with management and supervisory staff who have checked first-hand on the driving conditions and general condition of buildings.

While service to students and parents is a priority and schools will be kept open as much as is reasonably possible, student and staff safety is the primary consideration.

In the event of extreme weather conditions, parents are urged to check the **School District website** www.sd33.bc.ca or tune into radio stations **STAR FM (98.3 FM)** or **THE DRIVE (89.5 FM)**, to receive up-to-date information on school closures and information on the buses. Reports will start after 6:00 a.m. and will be repeated often. The information broadcast is directly from the School District. The reports are confirmed and there is no need to call your school, the School District Office or the radio station. Students will be marked absent for the day, but such an absence will not affect a perfect attendance record.

In the event that there is inclement weather but the school remains open, it is the parent's decision, based on their assessment of the relative safety of travel conditions, as to whether or not their children attend school.

A **Transportation Snow Plan** is in place for students who rely on travel by school bus and live in higher elevations such as Chilliwack Mountain, Majuba Hill, Ryder Lake and some areas of Columbia Valley and the Eastern Hillside. An announcement will be made should travel in these areas become challenging due to slippery road conditions. *(Please note: the greater Promontory area does not have a snow plan).*

All inclement weather information may be found on the School District website www.sd33.bc.ca

PARENT PORTAL PAMPHLET PAGE 1 (continued from Page 1)

How do I use MyEducation BC?

From your **Home** tab, you can access the four areas of the system. Click a tab to view information for each of the students for whom you are responsible.



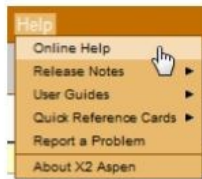
After you click a tab, side-tabs appear on the left side of the page. Click the side-tabs to view detailed information.

Click this tab...	To view your child's...
Family	<ul style="list-style-type: none"> Demographics, address, photo Contact names and phone numbers Daily attendance Conduct incidents and actions taken Transcripts, credit summary, and graduation summary Assessments, such as FSAs and Provincial Exams Current class schedule and course requests Membership/Enrollment history in district's schools and programs Records of student fees and events

Click this tab...	To view your child's...
Academics	<ul style="list-style-type: none"> current schedule grades assignments class attendance
Activities	Extracurricular activities, including: <ul style="list-style-type: none"> list of members events for each group
Calendar	Monthly calendar with events. You can customize the calendar by choosing the categories you want listed and color-code each child's activities to include: <ul style="list-style-type: none"> due date reminders for class assignments activity events school calendar

What if I need more help?

MyEducation BC is easy to navigate. The data is secure and view-only. Feel free to explore. If you have a question about how to do something, go to the **Help** menu for the following options:



- **Online Help:** Click to open online help, then click **Using the Student and Family Portal**. A table of contents, index, and search feature make it easy to find the information you need.
- **User Guides:** Click to open, download, and print a PDF version of *Using the Family Portal*.
- **Quick Reference Cards:** Select a topic to view a quick reference card.
- If you still have questions, contact: gloria_mccarty@sd33.bc.ca.



Getting Started with the Family Portal at

Sardis Secondary

45460 Stevenson Rd
Chilliwack BC V2R 2Z6

www.sardissecondary.ca

(Page 2 of pamphlet on the next page)

Be the Change Committee:

"The Be the Change Committee is collecting in-kind gifts and raising funds to purchase gift cards for youths whose families will be receiving Christmas hampers via Chilliwack Community Services. If you would like to support this project, please contact Ms. Irani at parween_irani@sd33.bc.ca before Dec. 1, 2017."

"The Breakfast Club continues to offer healthy, nutritious food to all students before school, at lunch, and after school in B120. We are always happy to receive donations of fresh fruit, granola bars, juice boxes, peanut butter, jam, and other breakfast items. For more information, please contact Ms. Irani at parween_irani@sd33.bc.ca."

"Operation Fairy Godmother ensures that all of our grads are able to access formal wear for all of the grad activities. Dresses and shoes are in a variety of sizes, colours, and styles; our menswear selection is limited, but we always welcome donations of clean formal clothing and accessories in good condition. Donations can be dropped off in room B120 or at the front office. For more information, please contact Ms. Irani at parween_irani@sd33.bc.ca."

PARENT PORTAL PAMPHLET PAGE 2 (continued from Page 3)

What is MyEducation BC?

MyEd BC is a secure, web-based student information management system. The system manages all facets of student data – from attendance to conduct, grades to schedules, and special education.

The Chilliwack School District has been using MyEducation BC since 2015 with great success. We are now implementing the Family portal so parents, teachers, and administrators can work together and communicate more effectively and efficiently.



What information can I access through MyEd BC?

As a parent/guardian, you can use one login to securely access the information for all of your children from just about anywhere. With MyEd BC, you can view:

- **Family contact and emergency information**
- **Academic information:** See real-time information about to your child’s academic achievement. Receive important documents like progress reports and report cards.
- **Conduct and attendance information:** Sign up for email notifications when new information is available.
- **Calendar events:** Color-code events to see at a glance what each family member is doing.

1

Is my child's information secure?

MyEd BC protects your student’s information with the same advanced technology your bank uses to protect your financial accounts. Rest assured that users only have access to information they need, and nothing more. We have carefully configured the system to ensure that your student’s information is confidential and can only be retrieved by you – the parent/guardian – and authorized school personnel.

You can only view, not edit your child’s demographic data. If you find that it is outdated or incorrect, notify your child’s school to correct any errors.

How do I access the system?

You can log on to MyEd BC’s Family Portal from any computer that connects to the Internet. This lets you access the system from anywhere – your home or office.

1. Open your browser to connect to the Internet.
2. Go to <https://www.myeducation.gov.bc.ca/aspn/logon.do>
3. Enter your **Login ID** and **Password**.
4. The first time you log on, you will be prompted to change your password and setup security information. After this is completed, the Parent Portal home page will display.

- **Login ID:**
33firstname_lastname
- **Password:**
Sept\$2017

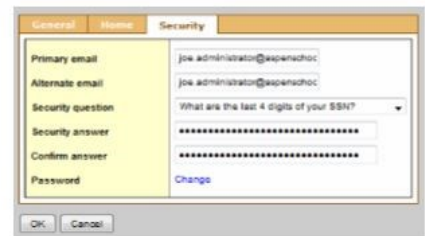
2

I lost my Login ID or password; or I never received them.

If you lost your Login ID or password, or if you never received them, contact:
gloria_mccarty@sd33.bc.ca.

How do I change my password or email address?

From any page, click **Set Preferences** in the upper-right corner of the screen.



Here you can set several of your user preferences, including your:

- Password
- Email address
- Appearance of your home page



3

Falcon Fridays

Sport your Falcon Gear or school colours every Friday. You can win gift cards and more!